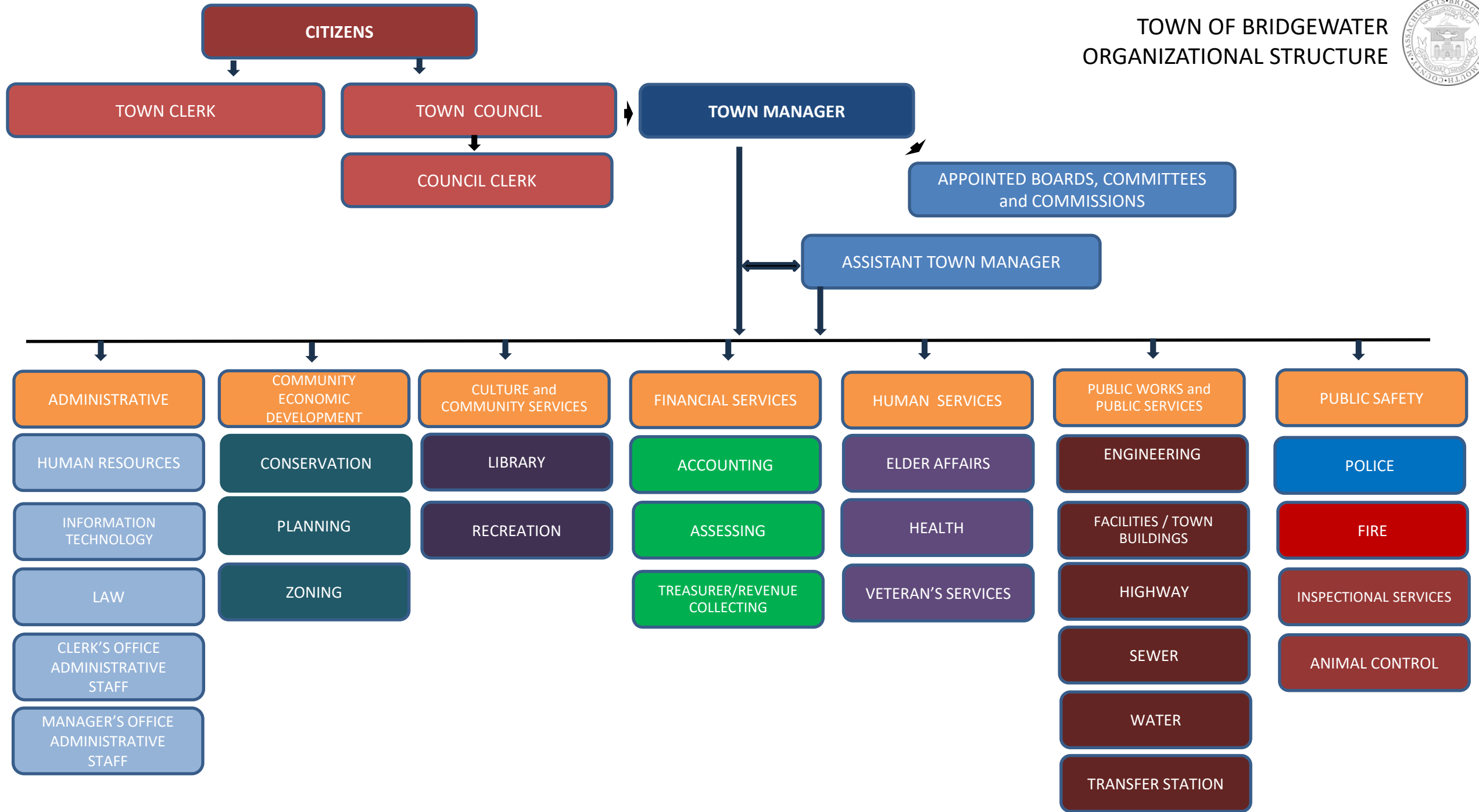
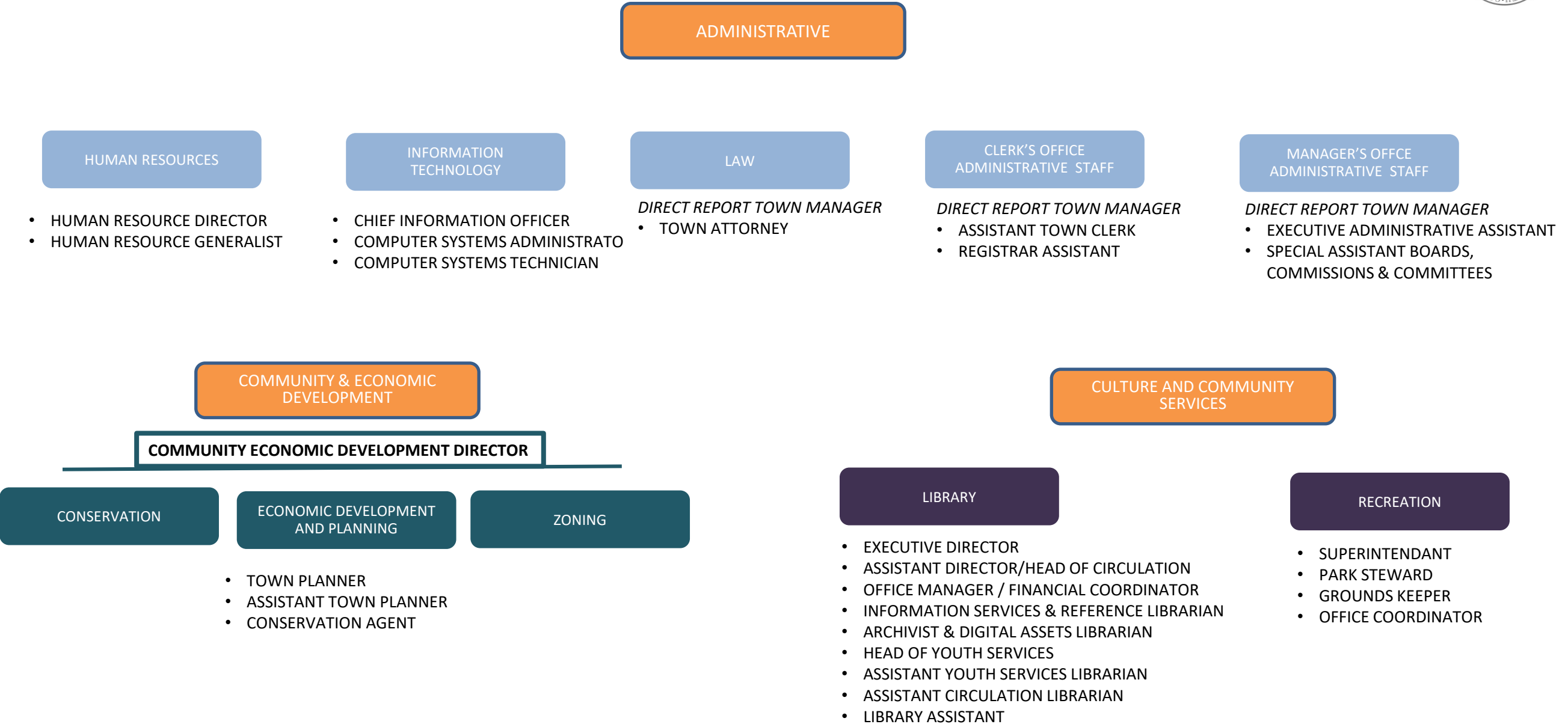


TOWN OF BRIDGEWATER
ORGANIZATIONAL STRUCTURE







FINANCIAL SERVICES

FINANCE DIRECTOR

ACCOUNTING

- ASSISTANT TOWN ACCOUNTANT
- COMPTROLLER
- BUSINESS UNIT ANALYST
- PAYROLL / BENEFITS COORDINATOR
- FINANCE TECHNICIAN

ASSESSING

- CHIEF ASSESSOR
- ASSISTANT ASSESSOR
- OFFICE ADMINISTRATOR

TREASURER / REVENUE
COLLECTING

- TREASURER/COLLECTOR
- ASSISTANT TREASURER/COLLECTOR
- FINANCE SPECIALIST TREASURER
- FINANCE SPECIALIST COLLECTOR

HUMAN SERVICES

ELDER AFFAIRS

- ELDER AFFAIRS DIRECTOR
- OUTREACH COORDINATOR
- EXECUTIVE ASSISTANT
- VAN DRIVER (2)

HEALTH

- HEALTH AGENT
- OFFICE ADMINISTRATOR

VETERAN'S SERVICE

DIRECT REPORT TO TOWN MANAGER

- VETERAN SERVICE OFFICER



PUBLIC WORKS

DEPARTMENT OF PUBLIC WORKS DIRECTOR

ENGINEERING

- TOWN ENGINEER
- JUNIOR ENGINEER
- EXECUTIVE ADMINISTRATIVE ASSISTANT

FACILITIES / TOWN BUILDINGS

- FACILITIES OPERATIONS COORDINATOR

HIGHWAY

- SUPERINTENDENT
- GENERAL FOREMAN
- HEAVY EQUIPMENT OPERATOR (5)
- LIGHT EQUIPMENT OPERATOR (3)
- CHIEF MECHANIC
- ASSISTANT MECHANIC
- LEAD MAN
- EXECUTIVE ADMINISTRATIVE ASSISTANT

SEWER

WATER

SUPERINTENDENT

- ASSISTANT SUPERINTENDENT WATER POLLUTION CONTROL DIVISION
- WATER DISTRIBUTION SUPERVISOR
- CHIEF WATER OPERATOR
- WATER FOREMAN
- ASSISTANT CHIEF WATER OPERATOR
- WWTP MECHANIC I
- WWTP MECHANIC II
- WWTP OPERATOR (4)
- WWTP CONSULTANT
- LIGHT EQUIPMENT OPERATOR (2)
- HEAVY EQUIPMENT OPERATOR (3)
- SENIOR WATER HANDLER
- SENIOR WATER OPERATOR
- WATER HANDLER (3)
- OFFICE ADMINISTRATOR
- ADMINISTRATIVE ASSISTANT

PUBLIC SERVICES

TRANSFER STATION

DIRECT REPORT TO TOWN MANAGER

- TRANSFER STATION AGENT



PUBLIC SAFETY

POLICE

- CHIEF
- CAPTAIN
- LIEUTENANTS (2)
- SERGEANTS (3)
- K-9 SERGEANT
- DETECTIVE (4)
- OFFICER (27)
- PROACTIVE ENFORCEMENT OFFICER (2)
- MOTORCYCLE OFFICER (2)
- K-9 OFFICER
- FIREARMS LICENSING OFFICER
- SCHOOL RESOURCE OFFICER
- POLICE CADET (2)
- EXECUTIVE ASSISTANT
- OFFICE ADMINISTRATOR
- ADMINISTRATIVE ASSISTANT

FIRE

- CHIEF
- DEPUTY CHIEF
- CAPTAINS (4)
- FPO CAPTAIN
- LIEUTENANTS (4)
- TRAINING LIEUTENANT
- EMS LIEUTENANT
- FIREFIGHTERS (40)
- EXECUTIVE ADMINISTRATIVE ASSISTANT
- OFFICE ADMINISTRATOR

INSPECTIONAL SERVICES

- INSPECTOR OF BUILDINGS/ZONING ENFORCEMENT OFFICER
- PLUMBING AND GAS INSPECTOR
- WIRING INSPECTOR
- SEALER OF WEIGHTS AND MEASURES
- OFFICE ADMINISTRATOR

ANIMAL CONTROL

DIRECT REPORT TO TOWN MANAGER

- **CONTRACTED** ANIMAL CONTROL OFFICER